

Candidate's name

Total Marks 100

N.B. Answer **either** question 1a **or** 1b. Do **not** answer both questions.

- 1a** Using this opening, compose a 16-bar melody. Include a modulation to any closely related key. Phrase the completed melody. Add tempo and expression marks. (Copy to the staves below.)

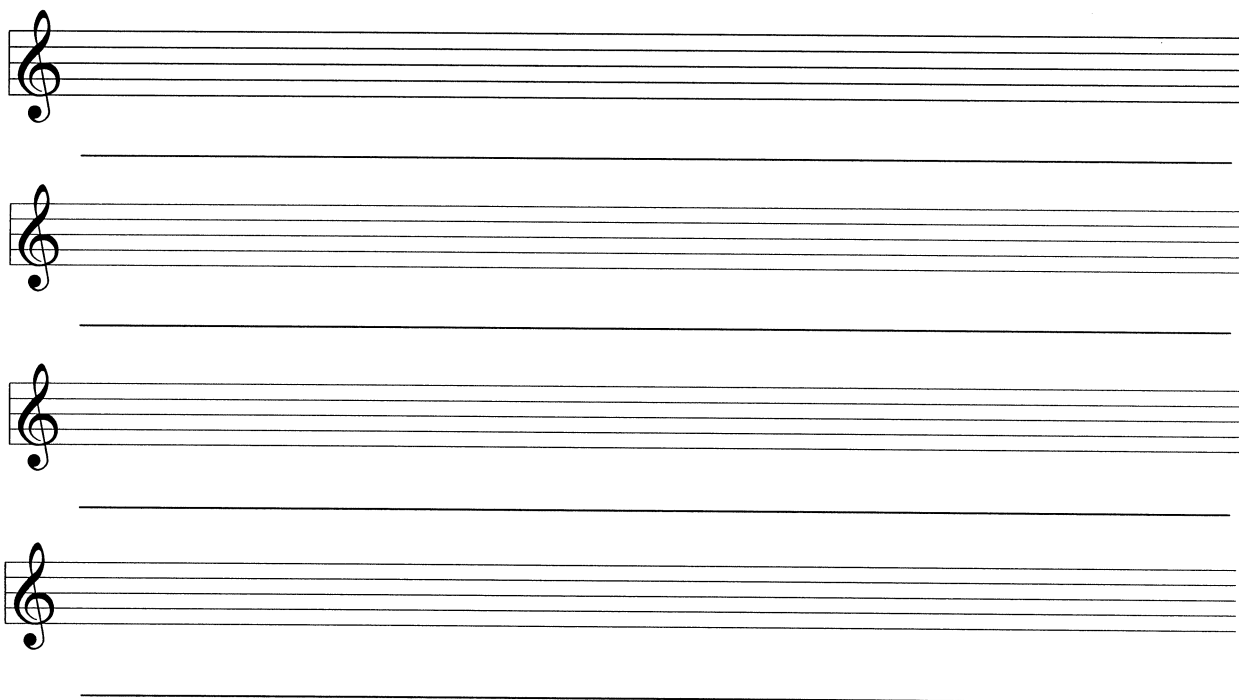


Or

- 1b** Compose a tune for this verse. Write each syllable under the note(s) to which it is to be sung.

Today as I went out to play
I saw a brown frog in the way,
I know that frogs are smooth and green,
But this was brown - what could it mean?
I asked a lady in the road;
She said it was a spotted toad!

Mary K Robinson



- 2 Choose suitable chords to accompany the following melody. Indicate the chords by roman numerals. Write in the complete bass line adding some passing or auxiliary notes where suitable (no inner parts needed).

Numerals _____

Numerals _____

15

- 3 Analyse the chording implied by the given soprano and bass lines by using roman numerals. Complete the harmonisation by adding parts for alto and tenor voices.

Numerals _____

15

- 4 Complete the treble over the given bass to create a simple two-part texture.

5 Study this harmonisation for SATB. Then answer the questions that follow.

a (i) Name the tonic key _____.

(ii) Several brief modulations occur throughout the piece, each is enclosed in a box and marked w, x, y, z. Identify each key.

w _____ x _____ y _____ z _____

b Fully analyse the 5 chords marked with *. Use roman numerals and include b, c, or d to indicate any inversions used. All are in the tonic key.

bar 2 (beat 2) _____ bar 2 (beat 3) _____ bar 10 (beat 3) _____

bar 10 (beat 4) _____ bar 11 (beat 2) _____

c Identify each circled note as one of the following:

Unaccented passing note. Accented passing note. Auxiliary note. Suspension

Soprano bar 1 _____. Soprano bar 4 _____. Alto bar 11 _____.

The musical score for the 'Kodaly' section is arranged in a multi-staff format. The instruments and their parts are as follows:

- Fl.** (Flute): Rests in the first four measures, then plays a triplet of eighth notes in the fifth measure.
- Ob.** (Oboe): Plays a continuous eighth-note pattern in the first four measures, then rests in the fifth measure.
- Cl. (Si b)** (Clarinet in B-flat): Rests throughout the section.
- Cor. (Fa)** (Cor Anglais in F): Plays a melodic line with accents in the first four measures, then rests in the fifth measure.
- Tr. (Do)** (Trumpet in D): Rests in the first four measures, then plays a melodic line with accents in the fifth measure.
- Ptti.** (Percussion): Plays a single note in the fourth measure.
- Trgl.** (Trombone): Plays a continuous eighth-note pattern throughout the section.

The score includes dynamic markings such as *ff* (fortissimo), *pp* (pianissimo), and *f* (forte), as well as articulation like accents and slurs. The tempo is marked 'Allegretto' and the time signature is 3/4. The key signature has two flats (B-flat and E-flat).

6 Study the short orchestral score extract printed on page 4, then answer the following questions.

a Give the full name in English for each of these abbreviations:

Cor. (Fa) _____ Cl. (Sib) _____

Ptti _____ Trgl. _____

b Name the orchestral family to which each of the above belongs:

Cor. (Fa) _____ Cl. (Sib) _____

Ptti _____ Trgl. _____

c Explain the meaning of **1. 2.** written above some staves in bars 1 and 3.

d Name the two transposing instruments included on the score.

_____ & _____.

e Explain why the lowest staves have only one stave line.

f How many woodwind players are needed in this extract? _____.

g Explain: senza sord. _____

7 Answer questions **a**, **b** and **c**.

- a** Name the composer for each of these works from the Romantic period. In the case of any **two**, name the type of composition each is.

	composer	type of work
The 'New World '	_____	_____
Swan Lake	_____	_____
Carmen	_____	_____
The 'Hebrides'	_____	_____

- b** Name a composer from the Romantic period who contributed in a significant way to each of the following types of composition:

Symphony _____
 Opera _____
 Keyboard music _____

- c** Give the nationality of each of the following well-known composers:

Brahms _____
 Puccini _____
 Tchaikovsky _____